

GMC-JM45 Sealed Magnetic Catch

Features

- Body covered with resin prevents rusting
- Small body with strong magnetic force (neodymium magnet)
- Thin magnetic catch of 5.6 mm thick ideal for tight spaces
- Components for aluminium frame installation also available, contact Gripwell for assistance

Notes

- Max. temperature: 80°C
- Recommended counter plates sold separately: **GMC-JMP45**, **GAS-68**, or **GMC-JM49**

Recommended Screws

- M4 screw, tapping screw nominal 4 (truss or binding head, SUS)

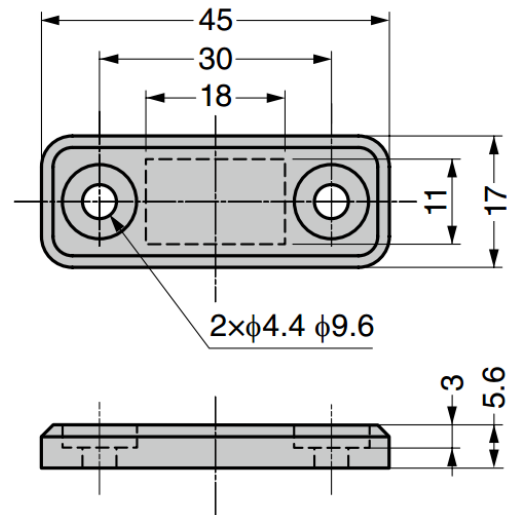
Part Name	Material	Colour
Body	PP	White, Black
Magnet	Neodymium	-

Body

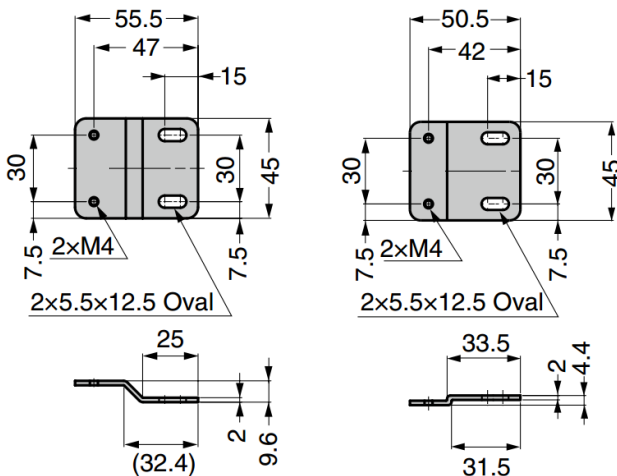
Part No.	Colour	Magnetic Force	
GMC-JM45WT	White	29.4 N	3 kg
GMC-JM45BL	Black		

Counter Plates (Sold Separately)

Part No.
GMC-JMP45WT
GMC-JMP45BL
GAS-68
GMC-JM49



GAS-JM-45 Bracket



GAS-JM-45F (Flat Type)

GAS-JM-45D (Stepped Type)

Part No.	Material	Finish
GAS-JM-45F	Stainless	Barrel
GAS-JM-45D	Steel 304	Polished